

ITEM NO. : 13

ITEM : SIDE MOUNTED MAGNETIC LEVEL INDICATOR WITH ROLLER TYPE INDICATION WITH & WITHOUT SWITCHES FOR ALL SERVICES LIKE LOW SP.GR.LIQUID, FULL VACUUM, HIGH PRESSURES UPTO 320 BARS, LOW AND HIGH TEMP, APPLICATIONS LIKE NH3, LPG & DOWTHEM ETC.
REFER OUR GENERAL ARRANGEMENT DRG.NO.RSMLIRA-3000

PRINCIPLE OF OPERATION :

SS float which is equipped with alnico magnet moves up or down alongwith level rise or decrease. This float magnets movement will be magnetically coupled to the colored roller outside the chamber with scale for indication.

MATERIAL SPECIFICATIONS :

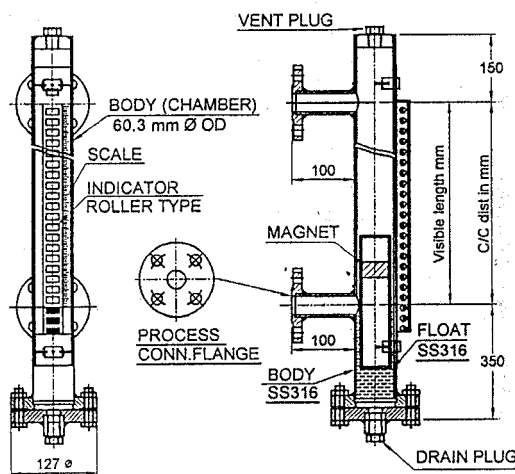
- | | | |
|---|---|--|
| 1. Type | : | Magnetic. |
| 2. mounting | : | Vertical side-side |
| 3. C / C distance | : | To mention |
| 4. Visible length | : | Same as C/C distance |
| 5. Service | : | To mention |
| 6. Op.pressureKg/Cm2g/temp. ° C /Sp.Gr. | : | To mention |
| 7. Hydro test pressure | : | 1.5 times of max. Op.pressure |
| 8. Process connection size & rating | : | ¾" ANSI 150 # RF flanged or to mention |
| 9. Process flange material | : | To mention |
| 10. Float Material | : | SS304/SS316/PP/PVC/HDPE/PVDF/PTFE |
| 11. Wetted parts Material | : | SS304/SS316/PP/PVC/HDPE/PVDF/PTFE |
| 12. Scale | : | Linear marking i.e. acrylic / SS white background with black marking in cms. lines are engraved @each 10mm |
| 13. Vent & Drain | : | ½" BSP (F) with plug |
| 14. Indication | : | Local indication |
| 15. Accuracy | : | ± 10mm of the full scale |
| 16. Gaskets | : | Will be Teflon |
| 17. Bolts & Nuts | : | SS304 |
| 18. Alarms / Qty | : | If required will be provided as per our general arrangement DRG NO. RSMLIRA-3000 |
| 19. Enclosure / Cable entry | : | Weatherproof or flameproof / ¾" ET (F) |

LIMIT SWITCHES FOR SWITCHES

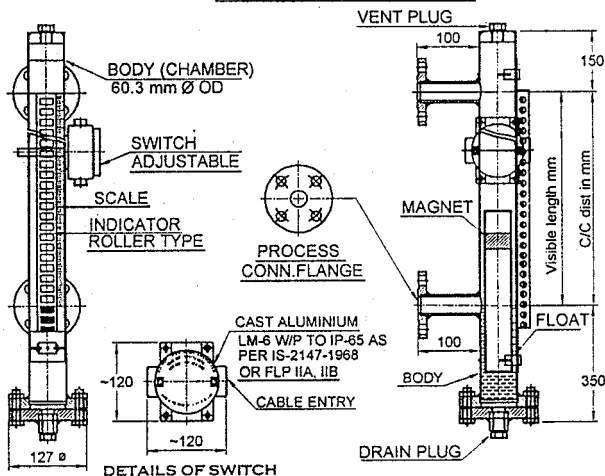
One or two or four limit switches may be provided externally to the indicator as shown in our drg.no.RSMLIRA-3000. and these switches will changeover their contacts as soon as the level sensed by the float increases or decreases above the set point.

- | | | |
|----------------|---|--|
| Contact rating | : | 230 VAC 5 A (surge) 60 W / VA . 1 NO. SPDT Contact for each level sensing. |
| No of switches | : | To Mention |

**SIDE MOUNTED MAGNETIC
LEVEL INDICATOR ROLLER TYPE**

**RSMLIR-3000**

**SIDE MOUNTED MAGNETIC
LEVEL INDICATOR ROLLER TYPE
WITH SWITCHES**

**RSMLIRA-3000**