

ITEM NO. : 20

ITEM : TRANSPARENT TYPE LEVEL GAUGE

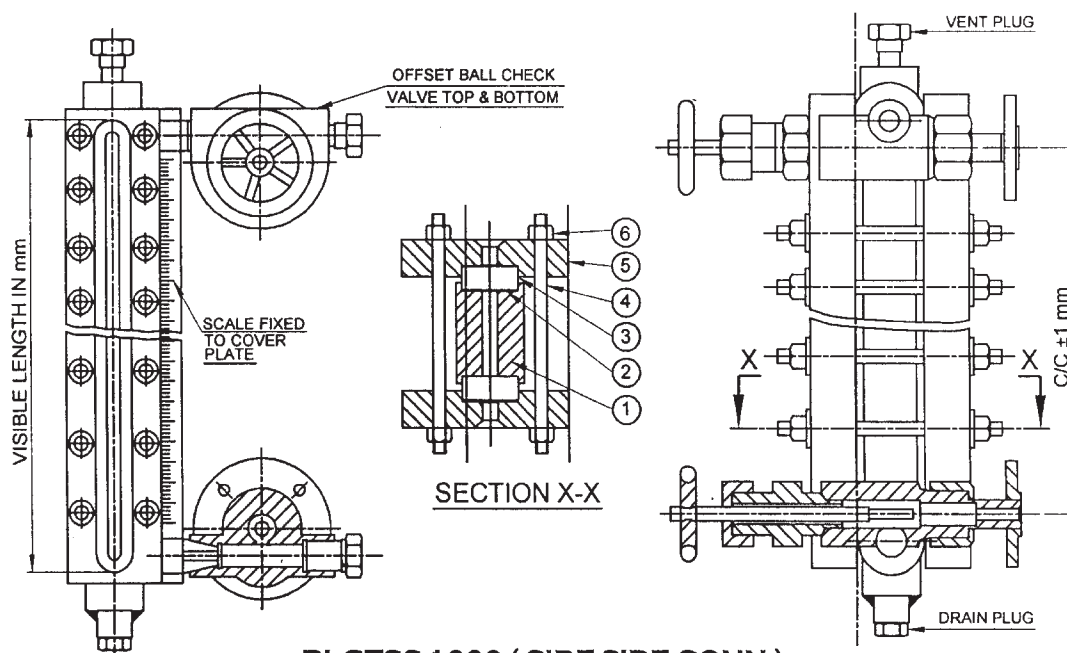
REFER OUR GENERAL ARRANGEMENT DRG.NO. RLGTS-1000.**PRINCIPLE OF OPERATION :**

The liquid is contained between the two sight glasses and under normal conditions the level of liquid is visible as it is through naked eye. The indication is very clear. An illuminator is mounted on the rear side of the gauge when required. Its light rays are deflected by a louvered screen upwards into the liquid column. Due to the provision of illuminator the light rays which impinge on the surface of the meniscus are reflected back to the eyes of the observer. Due to the above he sees in the gauge the illuminated surface of the liquid.

Colored media are easily observed. An illuminator helps to view in an error free manner in the case of water clear media or steam.

MATERIAL SPECIFICATIONS :

1.	Type	:	Transparent
2.	Mounting	:	Side-Side / Top-Bottom
3.	C/C distance	:	To Mention
4.	Visible length /No. of section	:	To Mention
5.	Service	:	To Mention
6.	Op. pressure Kg/Cm2g/ temp. ° C/ Sp Gr.	:	To Mention
7.	Hydro test Pressure Kg/Cm2g	:	1.5 times of Max. Pressure
8.	Process Conn. Flange size & rating	:	To Mention
9.	Process Conn. Flange Material	:	To Mention
10.	Material of Glass	:	Toughened Borosilicate Imported Klinger / Maxos make
11.	Material of Construction	:	CS/SS304/SS316/PP / PTFE
12.	Material of Cover Plate	:	CS to ASTM A-105 (Non wetted parts)
13.	Valve Type / Design	:	Ball check / Auto Shut- Off
14.	Valve Body Material	:	CS/SS304/SS316/PP/ PTFE
15.	Valve Trim Material	:	SS 316
16.	Vent / Drain connection	:	½" NPT (F) with Plug (OR) To Mention
17.	Material of bolts & nuts	:	ASTM A-193-B7 & ASTM-A-194-2H
18.	Gaskets/seals	:	CAF / Teflon
19.	Scale	:	Linear marking i.e. SS white background with black marking in cms. Lines are engraved @ each 10mm.
20.	Qty	:	To Mention

TRANSPARENT LEVEL GAUGE

RLGTSS-1000 (SIDE-SIDE CONN.)
RLGTT-1000 (TOP-BOTTOM CONN.)