

# REVATHI ELECTRONICS & CONTROLS

## ITEM : 1

## ITEM : TOP MOUNTED FLOAT OPERATED LEVEL SWITCH

### REFER OUR GENERAL ARRANGEMENT DRG.NO.RTMFLS-2001-WP

#### PRINCIPLE OF OPERATION :

This system has a top mounted flange to which a single stem is welded on top. Floats are fabricated out of stainless steel or polypropylene. These floats enclose Alnico magnets inside. Magnets are not in contact with liquid service. The floats lie in between end stops. The actuation points are factory set. It can be adjusted also. Inside the single stem the magnetic switches are fixed. These magnetic switch are hermetically sealed, inert gas filled and contacts are gold plated.

When this level rises above the actuation point the float which buoys up alongwith the level rise actuates the magnetic switch which is kept inside the stem. The closure of the switch can operate a contactor or relay to indicate the level rise or decrease.

#### DETAILS OF SEALED MAGNETIC SWITCH :

The basic switch used in all cases will be of imported origin and sealed type. The switch used is hermetically sealed inert gas filled magnetic switch with gold plated contacts of the following specifications.

- |    |                                 |   |  |
|----|---------------------------------|---|--|
| 1. | Contact Rating / Form           | : | 230 VAC 5 A (Surge) 60 W \ VA / 1 No. SPDT.<br>Can directly operate 110/230 VAC Siemens or L&T size 1 contactor. |
| 2. | Max. initial contact resistance | : | 150 milli ohms   |
| 3. | Max. Operate time               | : | 0.5 milli second   |
| 4. | Max. Release time               | : | 0.1 milli second   |
| 5. | Life expectancy                 | : | 100 million operations   |

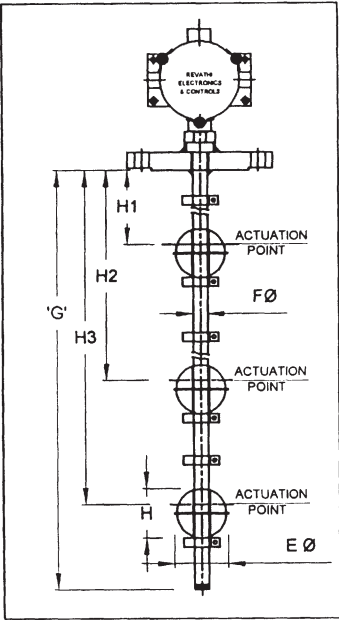
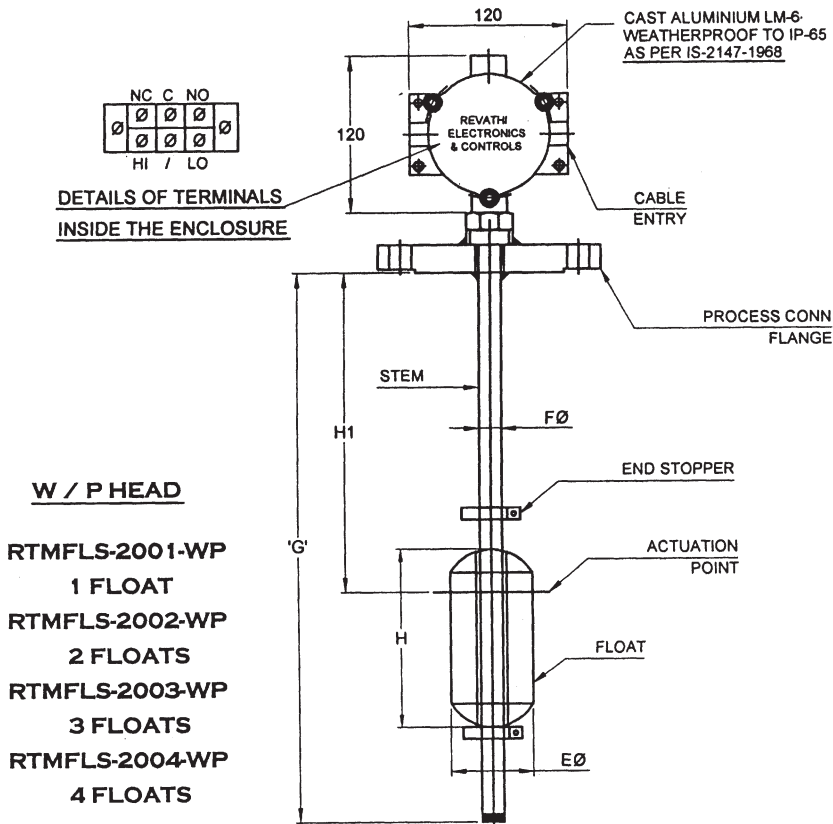
#### MATERIAL SPECIFICATIONS:

- |     |   |   |   |
|-----|---|---|---|
| 1.  | Type  | : | Top mounted float type Level Switch   |
| 2.  | Switch type                                       | : | Magnetic  |
| 3.  | Mounting  | : | Field   |
| 4.  | Stem, Floats, End stoppers etc.                   | : | SS304 / SS 316/ PP / PVC / HDPE/ PVDF/ PTFE   |
| 5.  | Material of flange                                | : | CS/ SS304 / SS 316/ PP / PVC / HDPE / PVDF/ PTFE  |
| 6.  | Mounting flange                                   | : | 4" ANSI 150# RF B 16.5 (OR) To Mention  |
| 7.  | No. of floats                                     | : | 1 / 2 / 3 / 4 Nos. (HI, HI, LO & LOLO)  |
| 8.  | Stem length from bottom of the flange             | : | To Mention  |
| 9.  | HI & LO actuation point from bottom of the flange | : | To Mention  |
| 10. | Enclosure   | : | Weatherproof. The enclosure in addition in dust & vermin proof.   |
| 11. | Electrical cable entry                            | : | ¾" ET(F) STD.   |
| 12. | Adjustable  | : | The switches are adjustable over the entire stem length to have various level actuation points.         |
| 13. | Clearance   | : | Clearance between float & stem is quite enough to have free floating inspite of desposition of material |
| 14. | Service   | : | To mention  |
| 15. | Op Press Kg/Cm2g / Temp ° C / Sp. Gr.             | : | To mention  |
| 16. | Quantity  | : | To mention  |

- Note :**
- 1) Flameproof enclosure is certified by CMRS Dhanbad for group IIA, IIB as per IS-2148-1981. The enclosure in addition is dust and vermin proof.
  - 2) Flameproof enclosure for EEX-d IIC T6 group also could be supplied for hazardous areas.

REVATHI ELECTRONICS & CONTROLS

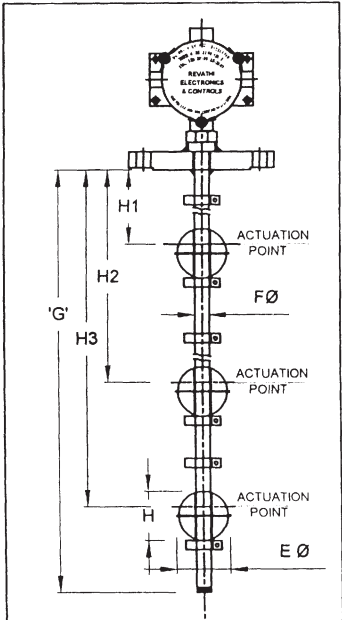
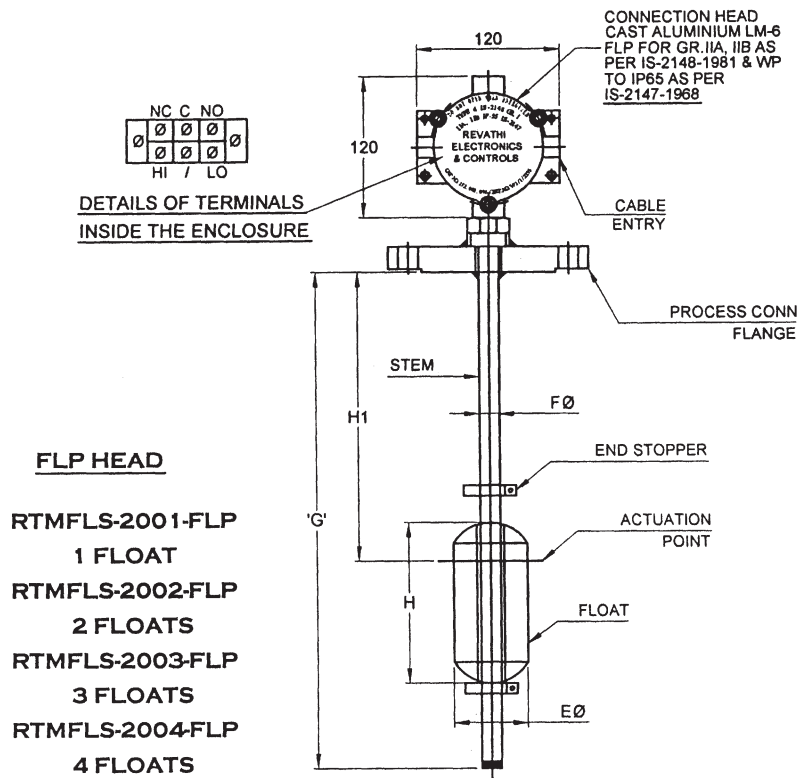
TOP MOUNTED FLOAT OPERATED WEATHERPROOF LEVEL SWITCH



TOP MOUNTED LEVEL SWITCH WITH BALL FLOAT

TOP MOUNTED LEVEL SWITCH WITH CYLINDRICAL FLOAT

TOP MOUNTED FLOAT OPERATED FLAMEPROOF LEVEL SWITCH



TOP MOUNTED LEVEL SWITCH WITH BALL FLOAT

TOP MOUNTED LEVEL SWITCH WITH CYLINDRICAL FLOAT