

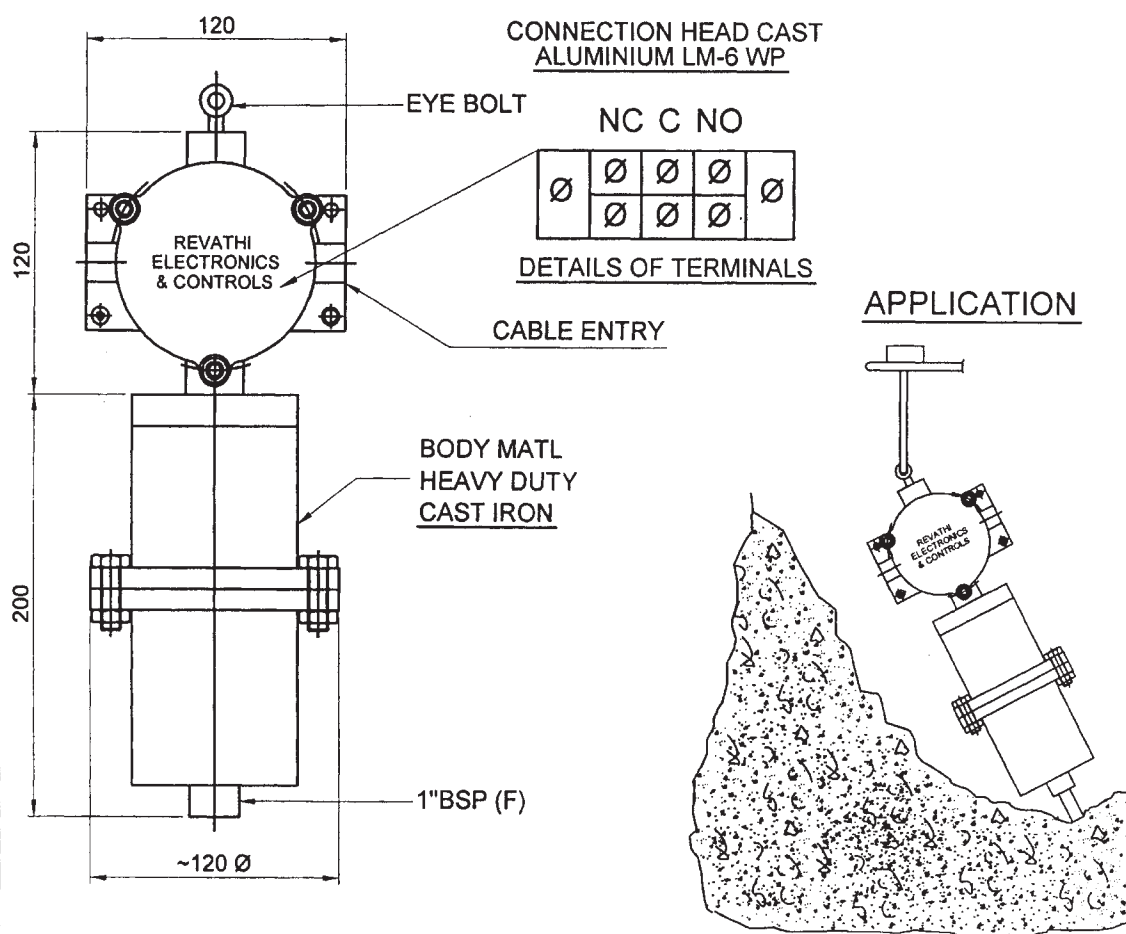
ITEM NO. : 34

ITEM : TILT SWITCH FOR SOLID LEVEL SENSING

REFER OUR GENERAL ARRANGEMENT DRG.NO.RSLS-1001-A/0

1. Make : REVATHI
2. Switch description : The switch is hung from L/S stock pipe top. The height depends on the position at which action is desired. To enable tilting of the switch 30cms long G1 conduit pipe is fixed on to the switch, so that when the tip of the conduit pipe touches the material the switch tilts.  
This causes change in control status ie. contacts changeover
3. No. of Contacts : 1 NO+ 1 NC.
4. Contact rating : 110 / 230 VAC 5 A,
5. Type of switch : Sealed Micro
6. Service / Op.press.<sub>kg/cm<sup>2</sup></sub>/temp.<sup>°</sup> C /Sp.Gr. : To Mention
7. Quantity : Nos.

### TILT-SWITCH



RSLS-1001-A/O-TILT