

REVATHI ELECTRONICS & CONTROLS

ITEM NO. : 8

ITEM : SIDE MOUNTED LEVEL SWITCH LINK TYPE.

REFER OUR G. A. DRG. NO. RSMFLS-1002-WPR OR. RSMFLS-1002-FLPR

PRINCIPLE OF OPERATION :

This system has a side Mounted Flange. Float is fabricated out of stainless steel this float encloses alonic magnet inside. Magnet is not in contact with liquid service. The actuation point is factory set. Inside the stem the magnetic switch is fixed. This magnetic switch is hermetically sealed, inert gas filled and contacts are gold plated.

When the level rises above the actuation point the float buoys up alongwith level rise and actuates the magnetic switch, which is kept sealed inside the stem. The switches are completely isolated and they do not come in contact with liquid. The closure of the switch can operate a contactor or relay to indicate the level rise or decrease.

DETAILS OF SEALED MAGNETIC SWITCH :

The basic switch used in all cases will be of imported origin and sealed type. The switch used us hermetically sealed inert gas filled magnetic switch with gold plated contacts of the following specifications.

1	Contact Rating / Form	:	230 VAC 5 A (Surge) 60 W \ VA / 1 No. SPDT can directly operate 110/230 VAC Siemens or L&T size 1 contactor.
2	Max. initial contact resistance	:	150 milli Ohms
3	Max. insulation resistance	:	10^{11} Ohms.
4	Max. operate time	:	0.5 milli second
5	Max. release time	:	0.1 milli second
6	Life expectancy	:	100 million operations

MATERIAL SPECIFICATION :

1.	Type	:	Side Mounted Level Switch Magnetic Link type
2.	Switch Type	:	Magnetic
3.	Mounting	:	Field (internal)
4.	All wetted paets malt.	:	SS304 / SS 316/ PP / PVC / HDPE/ PVDF/ PTFE
5.	Malt. of Flange	:	CS/ SS304 / SS 316/ PP / PVC / HDPE/ PVDF/ PTFE
6.	Service	:	To Mention
7.	Op Press kg/Cm2g / Temp ° C / Sp. Gr	:	To Mention
8.	Process Conn. Flange size & rating	:	3" ANSI 150# RF STD. OR To Mention

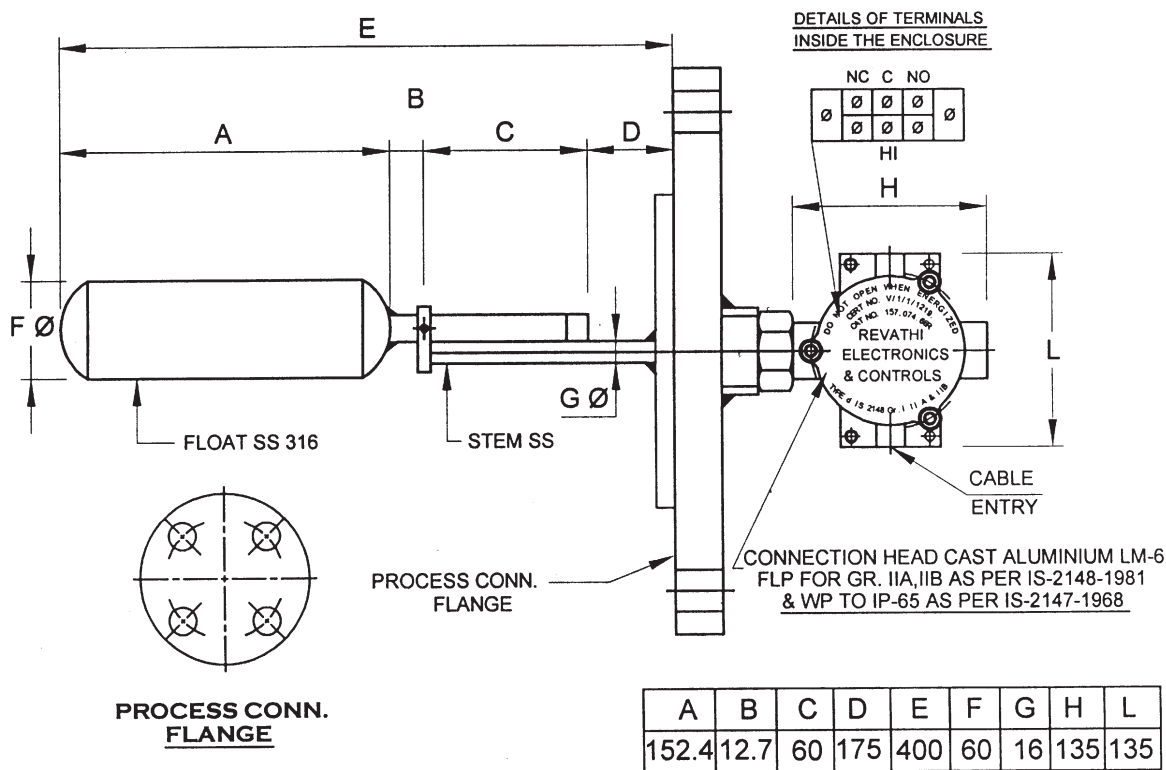
DETAILS OF SWITCH

9.	Output	:	Contact
10.	Switch type	:	Sealed Magnetic reed / Micro type.
11.	Qtn. / Form	:	1 NO. SPDT / 1 NO. DPDT
12.	Contact Rating	:	230 VAC 5A SURGE 60 W/ VA
13.	Differential	:	Fixed 3-4 mm approx.
14.	Repeatability	:	$\pm 2\%$
15.	On level Increase contact	:	To mention
16.	On level Decrease Contact	:	To mention
17.	Connection Head	:	Cast Aluminium Weatherproof or Flameproof
18.	Cable Entry	:	$\frac{3}{4}$ " ET (F) STD
19.	Qty.	:	To mention

- Note :** 1) Flameproof enclosure is certified by CMRS Dhanbad for group IIA, IIB as per IS-2148-1981. The enclosure in addition is dust and vermin proof.
- 2) Flameproof enclosure for EEX-d IIC T6 group also could be supplied for hazardous areas.

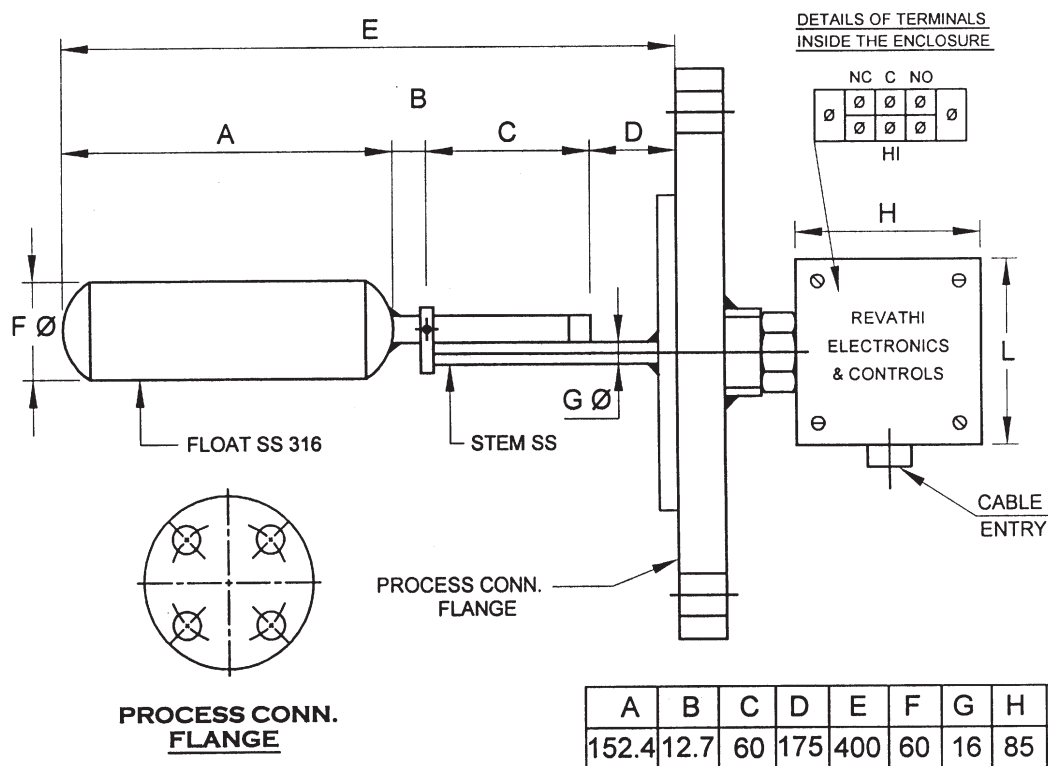
REVATHI ELECTRONICS & CONTROLS

SIDE MOUNTED FLOAT OPERATED LINK TYPE LEVEL SWITCH FLP



RSMFLS - 1002 - FLPR

SIDE MOUNTED FLOAT OPERATED LINK TYPE LEVEL SWITCH W/P



RSMFLS - 1002 - WPR