

REVATHI ELECTRONICS & CONTROLS

ITEM NO. : 7

ITEM : SIDE MOUNTED LEVEL SWITCH MAGNETIC REPULSION TYPE.
REFER OUR G. A. DRG. NO. RSMFLS-1001-FLPM. (OR) RSMFLS-1003/92-WPM .

PRINCIPLE OF OPERATION :

This system has a side Mounted Flange. Float is fabricated out of stainless steel this float encloses alonic magnet inside. Magnet is not in contact with liquid service. The float assembly carries a permanent magnet which is opposed by a similar magnet in the switch housing and this is the basic principle that is used to change over the magnetic switch contacts with the snap action. These magnetic switches are epoxy encapsulated. These magnetic switches are hermetically sealed, inert gas and contacts are gold plated.

When the level rises above the actuation point the float buoys up alongwith level rise and actuates the magnetic switch, which is kept sealed inside the stem. The switches are completely isolated and they do not come in contact with liquid. The closure of the switch can operate a contactor or relay to indicate the level rise or decrease.

DETAILS OF SEALED MAGNETIC SWITCH :

The basic switch used in all cases will be of imported origin and sealed type. The switch used us hermetically sealed inert gas filled magnetic switch with gold plated contacts of the following specifications.

1	Contact Rating / Form	:	230 VAC 5 A (Surge) 60 W \ VA / 1 No. SPDT. Can directly operate 110/230 VAC Siemens or L&T size 1 contactor.
2	Max. initial contact resistance	:	150 milli Ohms
3	Max. insulation resistance	:	10 ¹¹ Ohms.
4	Max. operate time	:	0.5 milli second
5	Max. release time	:	0.1 milli second
6	Life expectancy	:	100 million operations

MATERIAL SPECIFICATION :

1.	Type	:	Side Mounted Level Switch Magnetic Repulsion
2.	Switch Type	:	Magnetic
3.	Mounting	:	Field
4.	All wetted paets malt.	:	SS304 / SS 316/ PP / PVC / HDPE/ PVDF/ PTFE
5.	Service	:	To Mention
6.	Op Press Kg/Cm^2g / Temp ° C / Sp. Gr	:	To Mention
7.		:	
8.	Process Conn. Flange size & rating	:	OD : 120 mm PCD : 92 mm No. of holes : 4 of : 14 mm Thickness : 14 mm (OR) To Mention

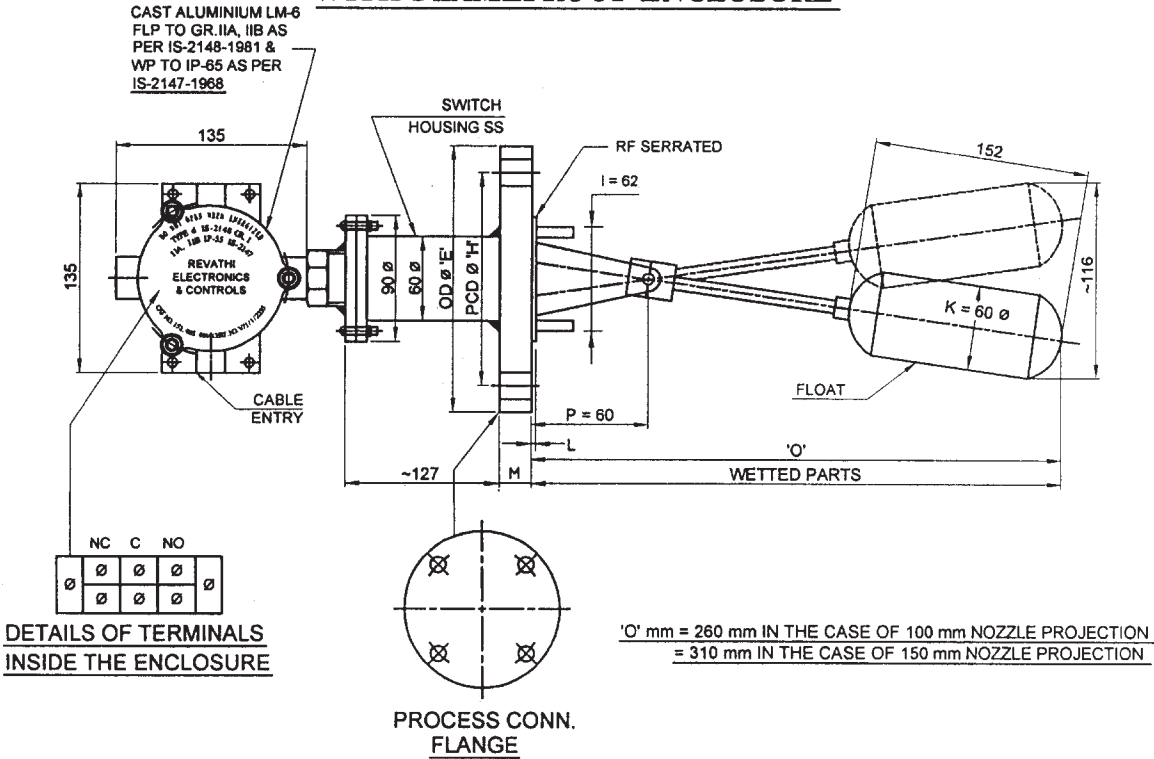
DETAILS OF SWITCH

1.	Output	:	Contact
2.	Switch type	:	Sealed Magnetic reed / Micro type.
3.	Qtn. / Form	:	1 NO. SPDT / 1 NO. DPDT
4.	Contact Rating	:	230 VAC 5A
5.	Differential	:	Fixed 12 – 16 mm approx.
6.	Repeatability	:	± 2%
7.	On level Increase contact	:	To mention
8.	On level Decrease Contact	:	To mention
9.	Connection Head	:	Cast Aluminium Weatherproof or Flameproof
10.	Cable Entry	:	¾" ET (F) STD
11.	Qty.	:	To mention
12.	DELIVERY	:	EX-STOCK SUBJECT TO PRIOR SALE

Note : 1) Flameproof enclosure is certified by CMRS Dhanbad for group IIA, IIB as per IS-2148-1981.
The enclosure in addition is dust and vermin proof.

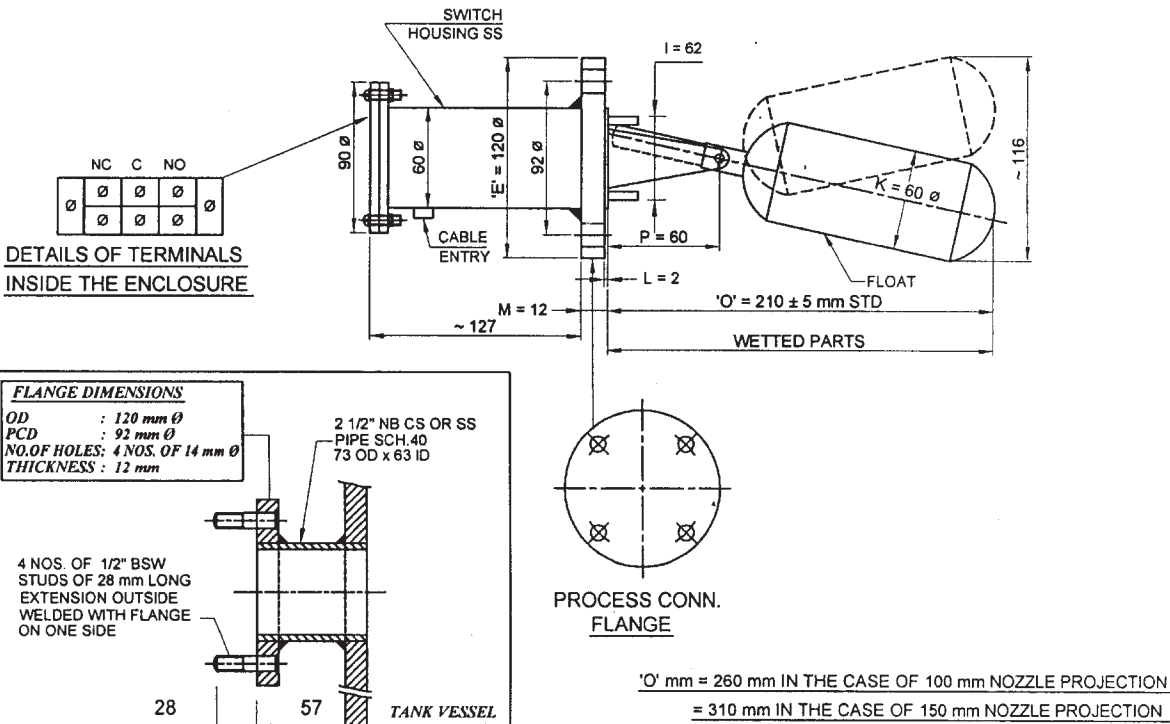
2) Flameproof enclosure for EEX-d IIC T6 group also could be supplied for hazardous areas.

SIDE MOUNTED FLOAT OPERATED REPULSION TYPE LEVEL SWITCH
WITH FLAMEPROOF ENCLOSURE



RSMFLS-1001-FLPM (OR) RSMFLS-1001-WPM W/P OR FLP HEAD

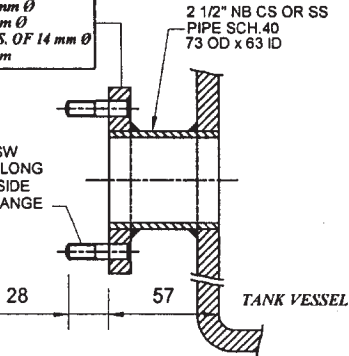
SIDE MOUNTED FLOAT OPERATED REPULSION TYPE LEVEL SWITCH



FLANGE DIMENSIONS

OD : 120 mm Ø
PCD : 92 mm Ø
NO. OF HOLES : 4 NOS. OF 14 mm Ø
THICKNESS : 12 mm

4 NOS. OF 1/2" BSW
STUDS OF 28 mm LONG
EXTENSION OUTSIDE
WELDED WITH FLANGE
ON ONE SIDE



PROCESS NOZZLE PAD WELDING DETAILS

RSMLS-1003 / 92 - WPM