

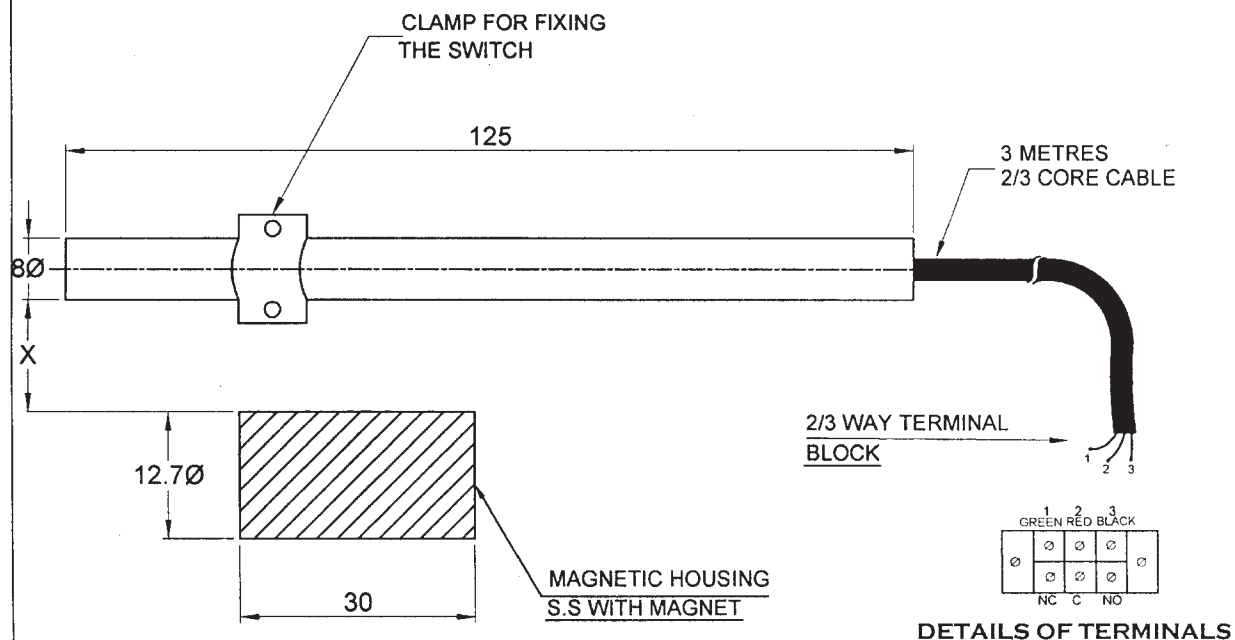
ITEM NO. : 38

ITEM : MAGNETIC PROXIMITY SWITCH RESISTIVE TYPE

REFER OUR G. A. SDRG. NO.RPS-200-A/O.

MATERIAL SPECIFICATIONS :

- | | | |
|------------------------------------|---|--|
| 1. Make | : | REVATHI |
| 2. Switch Description | : | The Switch will be operated when it comes in proximity (2.5 mm to 10 mm) of a moving magnet mounted on the equipment without any physical contact.
Switch will be hermetically sealed.
2 Metres of cable will be supplied alongwith the switch.
These switches are enclosed inside an SS enclosure to have mechanical protection. |
| 3. Contact Rating | : | 100 VA in the case of SPST switch and 60 VA in the case of SPDT switch.
230 VAC 5 A (Surge)
Can operate 110/230 VAC Siemens or L&T size 1. |
| 4. Max. Voltage | : | 300VAC |
| 5. Max. Initial Contact Resistance | : | 150 Milli Ohms |
| 6. Min. Insulation Resistance | : | 10^{11} Ohms. |
| 7. Max. operate Time | : | 0.5 Million Operations |
| 8. Life Expectancy | : | 100 Million Operations |
| 9. Basic Switch | : | SPST or SPDT |
| 10. Qty | : | To Mention |

MAGNETIC PROXIMITY SWITCH

X= THE DISTANCE BETWEEN MAGNET AND FIXED MAGNETIC SWITCH (15-20 mm)

APPLICATIONS : VALVE POSITION INDICATOR, SEQUENTIAL, SWITCHING ETC.

RPS-200-A/O