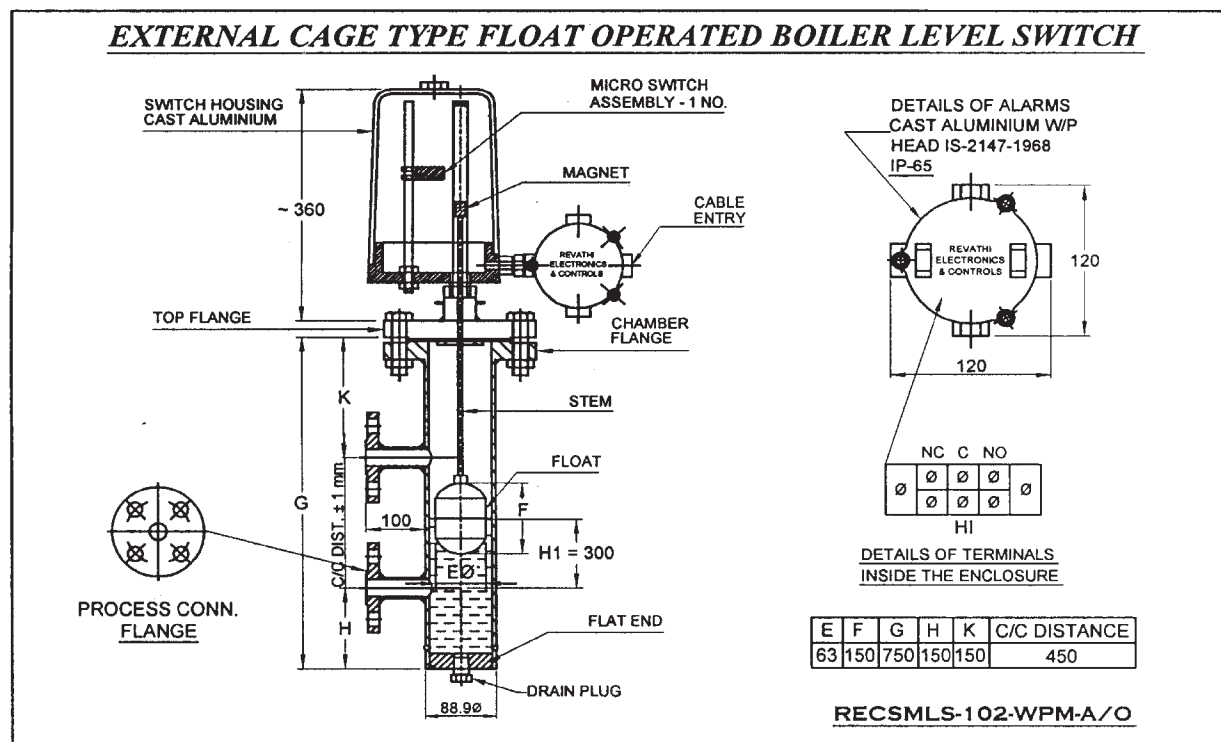


ITEM NO. : 12**ITEM : IBR APPROVED BOILER DRUM LEVEL SWITCHES WITH 2/3/4 POINTS SWITCHING ACTION. REFER OUR G. A. DRG. NO. RECSMLS-102-WPM-A/O.**

This is the product which you are looking for !!

These units are never tiring, snap acting, fit and forget type level switches from the reputed quality product manufacturer who has a proven track record of quality.

APPLICATION DRAWING :**PRINCIPLE OF OPERATION:**

This is a float operated Level Switch having a single float for low high level operations, enclosed inside a cage having side- side connections to process tank. Float is fabricated out of stainless steel. When the level rises above the actuation point, the float which buoys up, alongwith a level rise, actuates the magnetic switch which is kept inside the stem. The switches are completely isolated and they do not come into contact with liquid. The closure of the switch can operate a contactor or relay to indicate the level rise or decrease.

MATERIAL SPECIFICATION :

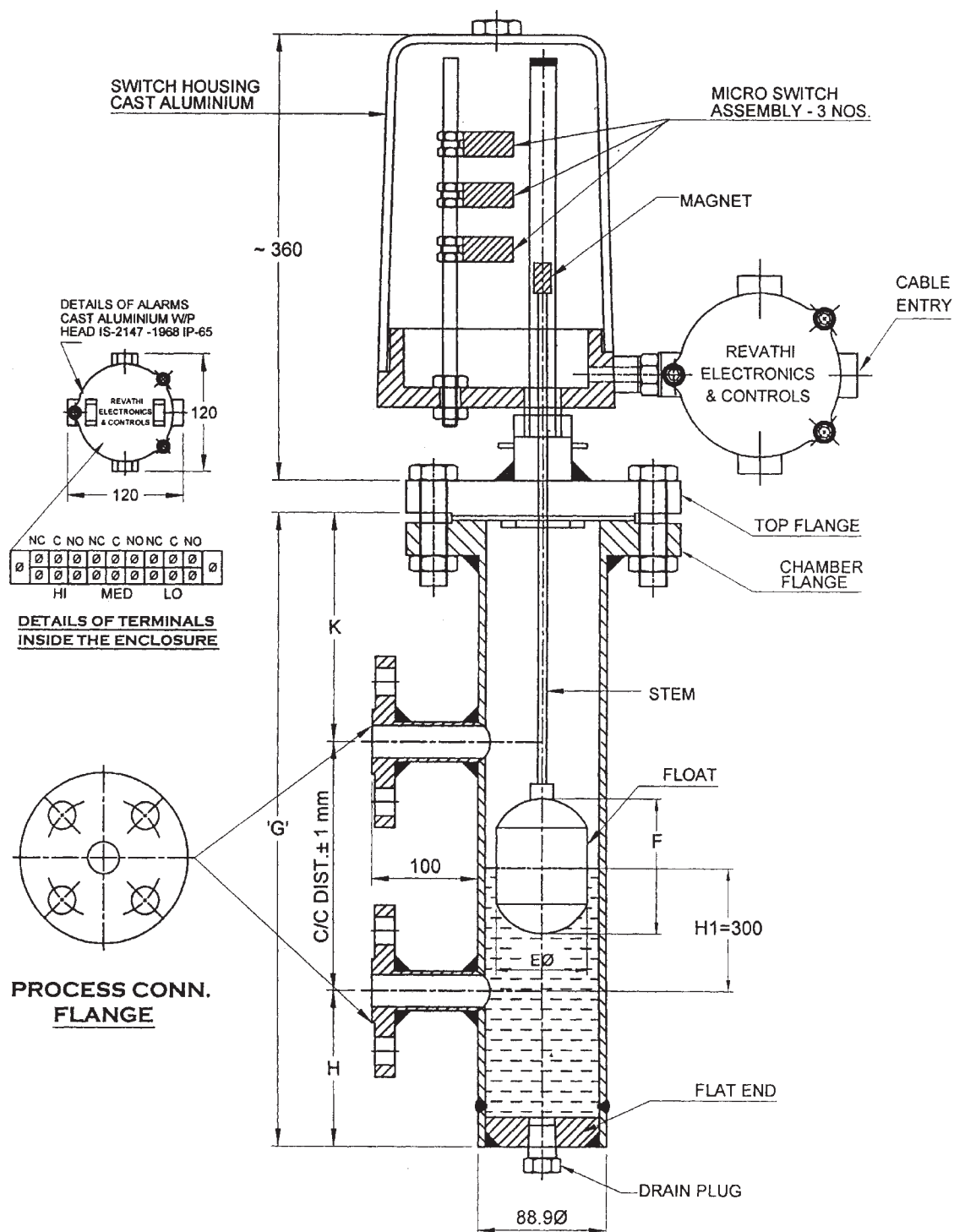
- | | | |
|---|---|---|
| 1. Tag Number | : | To mention |
| 2. Service | : | To mention |
| 3. Op Press Kg/Cm ² / Temp ° C / Sp. Gr. | : | To mention |
| 4. C/C Distance of the chamber | : | To mention |
| 5. Body / Cage material | : | CS |
| 6. All wetted parts matl. | : | SS304 / SS316 |
| 7. Pross. Conn. Flange Size & Rating | : | 25 NB ANSI 300# RF B 16.5 or To mention |
| 8. Process Conn. Location | : | Side – Side / Side – Bottom |
| 9. Rotatable head | : | Yes |
| 10. Finned extension | : | If required will be provided |
| 11. Vent & Drain conn. Size | : | ½" NPT (F). with plug. |
| 12. No. of Float | : | 1 No. |

DETAILS OF SWITCH:

- | | | |
|---------------------|---|---|
| 13. Output | : | Contact |
| 14. Switch type | : | Micro |
| 15. Contact Rating | : | 230 VAC 5A |
| 16. Qtn. / Form | : | 1 NO. SPDT / 1 NO. DPDT |
| 17. Differential | : | Fixed approx. 30 mm |
| 18. No. of switches | : | 1 / 2 / 3 / 4 Nos. (HIHI, HI, LO & LOLO) |
| 19. Connection Head | : | Cast Aluminium Weatherproof or Flameproof |
| 20. Cable Entry | : | ¾" ET (F) STD |
| 21. Qty. | : | To mention |

ITEM NO. : 12

ITEM : IBR APPROVED BOILER DRUM LEVEL SWITCHES WITH 2/3/4 POINTS
SWITCHING ACTION. REFER OUR G. A. DRG. NO. RECSMLS-102-WPM-A/O.

EXTERNAL CAGE TYPE FLOAT OPERATED BOILER LEVEL SWITCH

E	F	G	H	K	C/C DISTANCE
63	150	750	150	150	450

RECSMLS-102-WPM-A/O